



TopYacht: Entering Finish Times.

Contents

Background:.....	2
Part 1: After-the-Event Data Entry:	2
Option 1: Use Step 9.....	2
Option 2: Use Step 9a, The Computer Stop-watch in Manual Mode.....	3
Option 3: Import from CSV.....	4
Part 2: Real-Time Data Entry:	5
Option 1: Single Series.....	5
Option 2: Multiple Series:.....	7
Option 3: Web Times:.....	7
Appendix 1: Numeric Keypads.....	8
Appendix 2: Importing Finish Times from a .csv File.....	9
Appendix 3: Using TopYacht with Places rather than Times.....	9
Appendix 4: Stopwatch: No Matching of Sail Numbers	10
Appendix 5: Produce a CSV file from Stopwatch.....	11
Associated Documents:	13
Revision Record	13

Background:

TopYacht offers five different methods of finish time entry.

Keep in mind that while the R.O. can restart a race as many times as necessary to 'get it right'; there is only one opportunity to get the finish right. To that end, everything that can be done to prevent errors should be put in place.

Additionally, producing accurate results as soon as practical for public and press consumption is the ultimate aim. Utopia would suggest that producing results that are in the public domain prior to competitors returning to shore is the best possible outcome.

Inputting finish times to any software package is a critical operation for this to happen. TopYacht has five different methods, each explained here. The choice as to which one is used is dictated by the resources available.

These five methods are classified into two groups, being

- After-the-event data entry, where times are manually loaded as they become available from the finish line, and
- Real-Time data capture as the boats finish.

Part 1: After-the-Event Data Entry:

Option 1: Use Step 9

This option is the original system developed for early releases of TopYacht and is still functional today. It allows manual entry of finish times on a boat by boat basis for boats in a single series.

It is accessed via Step 9 following the completion of Step 6 (or 6a).

Select Series and Race then.....

1. Type in Sail Number
2. Press Enter.
The cursor lands in the MN (minutes) box. To move the cursor left to the HR (hours) box either Shift Tab or minus key (on the numeric key pad.)
3. Enter the HR value. To move the cursor to the right, press the Tab, the Space-bar or the plus (+) key (on the numeric keypad).
4. Enter the minute value, then move to the Seconds box (SC) and add the seconds value.
5. Press Enter. This saves the times and returns you ready to enter the next Sail No.

Avoid using the mouse.

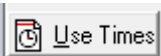
For Penalties (OCS, DNF etc.) then

1. Type in Sail Number
2. Press Enter.
The cursor lands in the MN (minutes) box.
3. Use the go right keys e.g. spacebar to move into the **DNF etc** box.
4. Enter the penalty (e.g. OCS).
5. Press Enter.

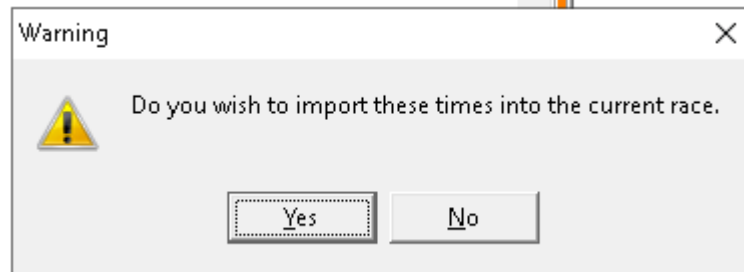
Option 2: Use Step 9a, The Computer Stop-watch in Manual Mode

The Keystrokes are essentially the same as Step 9, but the screen is more informative.

Sail Nos that are match are highlighted in Yellow. See [Appendix 4: Stopwatch: No Matching of Sail Numbers](#)


When satisfied, click 

This prompt appears..



➤ Click 

TopYacht will then process the race then display the results page.

TopYacht Stopwatch will produce a .csv file by clicking the  button, and following the prompts. This .csv file can be directly imported back into TopYacht. See [Appendix 2: Importing Finish Times from a .csv File](#)

Option 3: Import from CSV

This option loads finish times from a comma-separated-variable file (csv). The csv is an output option of spread-sheet software or other stop-watch package. It has the advantage of permitting the production of one file which contains finish times of boats from one or more series. The same file is loaded into the appropriate race for each series, and TopYacht will ignore time-stamps for boats not entered into that particular race.

A TopYacht Enhanced Licence is required to permit this functionality

Whether this method is chosen instead of option 1 is left to the user.

See [Create a csv File to Import Finish Times](#) and [Appendix 2: Importing Finish Times from a .csv File](#)

Part 2: Real-Time Data Entry:

The Computer Stop Watch

The beauty of this function is that it:

- Saves a lot of typing
- Reduces the chances of typing / translation errors
- Data entry is complete when the last boat passes through the finishing line
- Gives instant feedback of the validity of an entrant; See: Appendix 4: Stopwatch: No Matching of Sail Numbers
- To delete a row, highlight the row, hold down the Ctrl key and press D
- To Handle Duplicate Sail Numbers and identical time stamps see the document: [Stop Watch Handling Duplicates](#)

StopWach Three: VRCA Post Christmas Twilight Aggregate Race No: 7

Mode
 Auto
 Manual

Conditions

Sail

5

4

3

2

1

Use Times Save Times
 Update Order Top Down Ord
 Print HINTS
 Mark Duplicates Mark Laps
 Rec Play
 LiveTimes

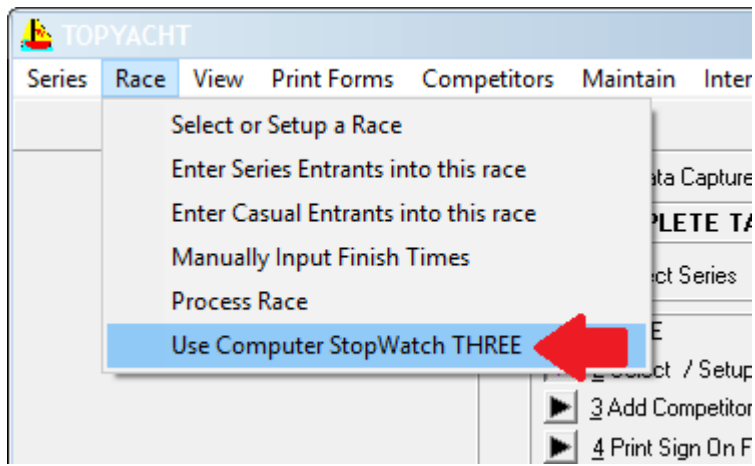
11:30:48

	Sail No	HR	MN	SC	DIDNOT	Org Sail No	Boat
▶ 34	G8	19	23	38			EXIL
	33	72	19	23	05		
	32	G18	19	22	53		THE
	31	G30	19	22	18		MAA
	30	G9	19	21	46		FREI
	29	G212	19	21	44		RAZ
	28	99	19	19	43		
	27	G120	19	19	41		BAL
	26	360	19	17	56		
	25	G5901	19	17	41		SPIF
	24	G296	19	17	27		INCH
	23	G59	19	17	07		MUS
	22	045	19	16	08		
	21	2323	19	15	40		Scra
	20	133	19	14	59		
	19	4474	19	14	53		
	18	AUS5585	19	14	41		LOC
	17	6865	19	14	39		
	16	15	19	14	24		
	15	1505	19	14	06		

Option 1: Single Series

For a race that only has one series with one (or more) results groups,

- Execute step 2, then
- Execute step 6, then



Option 2: Multiple Series:

An extension to TopYacht includes Sessions. The Sessions process allows the capture of finish times for more than one series at a common finish line.

Its implementation is a little different.

The recommended steps are included in this document. Further details are in TopYacht's HELP

Warning

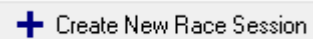
The Sessions mechanism does not handle casual entrants. Therefore, it is recommended to follow this procedure whether casual entrants are racing or otherwise.

For each series racing:

- Execute step 2 (Create a new Race)
- Execute Step 6 (or 6a... add entrants)

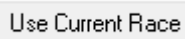
Then (and ONLY after the race for each series is added and populated with entrants)

- Create a new finish times session in Data Capture Mode.
- Select the series names in order from the drop-down list,

 + Create New Race Session



- Then click

 Use Current Race

- When all series have been added, click
- The familiar Computer Stop Watch screen will then appear. The Right Hand screen will be populated with all the entrants, including visitors.
- Proceed as normal.

 Capture Finish Times

Option 3: Web Times:

Web Times allows the capture of finish times on a mobile phone, tablet or laptop, and sends them to the TopYacht server. It differs from TopYacht because there is no processing of results available on the user's device. The expectation is that the processing of results takes place at a different location to the finish line and (most probably) by different personnel.

See: [TopYacht Web Times Users Guide](#)

Appendix 1: Numeric Keypads

The numeric keypad is designed for entering numeric data. It limits the amount of distance needed to reach the keys.

Users are advised to ensure the 'Num Lock' is on to enable the use of the numeric keypad.

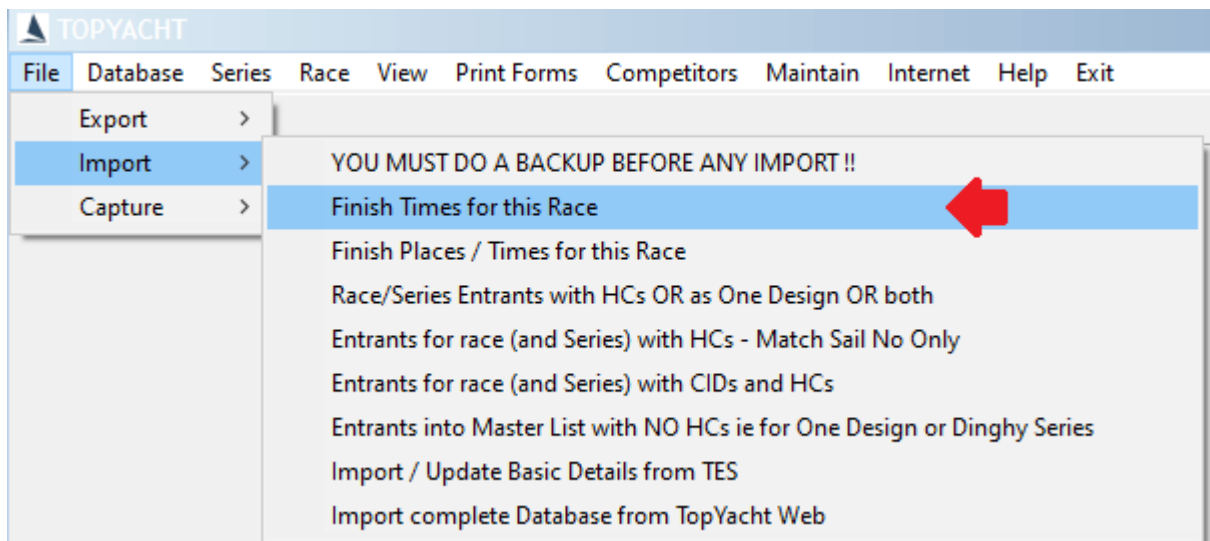



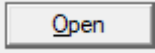
For laptops without a numeric keypad, wireless ones can be purchased.

Example: <https://www.amazon.com/Targus-Wireless-Numeric-Keypad-AKP11US/dp/B002NUYTCA>

Appendix 2: Importing Finish Times from a .csv File

- Execute step 2 (Create a new Race)
- Execute Step 6 (or 6a... add entrants)
- Enable the File Menu See *TopYacht HELP | Enable the "File Menu" item*
- **Admin | File | Import | Finish Times for this Race.**



- Click , and choose the file
- Click,  and follow the prompts
- Process the Race

Appendix 3: Using TopYacht with Places rather than Times.

Refer to the document: [Using TopYacht with Places rather than Times](#)

Appendix 4: Stopwatch: No Matching of Sail Numbers

When a Sail Number is loaded, and the 'Enter' button is pressed, Stopwatch takes the Time Stamp, and with the sail number loads it into the left-hand table.

The screenshot shows the Stopwatch software interface. At the top, a large digital clock displays '16:26:26'. To its right, there are status indicators: 'LiveTimes OFF' and 'DateLabel'. Below the clock is a table with columns: 'Sail No', 'HR', 'MN', 'SC', 'DIDNOT', 'Org Sail No', 'Boat Name', and 'Class'. The table contains 10 rows of data, with some rows highlighted in yellow and others in cyan. A red arrow points to the 'Save Times' button in the left-hand panel. To the right of the main interface, there is a smaller table with columns: 'Sail #', 'Class', 'Boat Name', 'Note', and 'NOTE1'. This table contains 16 rows of data, with some rows highlighted in yellow and others in cyan. The status bar at the top right shows '19 10 Initialised' and 'Entrants: 16'.

If the Sail Number matches one in the Right-Hand table (containing the entered boats) the background turns yellow. If the right-hand table does not contain an identical sail number, it remains white (as for 9777) above.

The Blue –background entries (all who have received some form of penalty) are separated out from the list with negative order numbers. Note that the time-stamps remain intact for audit reasons.

The usual causes of a no-match are

- Boat has not entered
- Competitor has borrowed a sail from a friend from another club and not told anyone
- The RO calling the finish has misread the sail number.

Some forensic work is needed to resolve this, and edit the sail numbers appropriately.

- Amend the entry in the Sail No. column to reflect the true number registered with the boat.
- Transfer the called number to the Org Sail No. column. (This gives an audit trail)
- Club policy should dictate how to handle the first two causes above.

Appendix 5: Produce a CSV file from Stopwatch

From Stopwatch,

StopWach Three: VRCA Post Christmas Twilight Aggregate Race No: 7

Mode: Auto Manual

Conditions:

11:30:48

Sail

5

4

3

2

1

Use Times Save Times

Update Order Top Dwn Ord

Print HINTS

Mark Duplicates Mark Laps

Rec Play

LiveTimes

..	Sail No	HR	MN	SC	DIDNOT	Org Sail No	Boat
▶ 34	G8	19	23	38			EXIL
33	72	19	23	05			
32	G18	19	22	53			THE
31	G30	19	22	18			MAA
30	G9	19	21	46			FREI
29	G212	19	21	44			RAZ
28	99	19	19	43			
27	G120	19	19	41			BAL
26	360	19	17	56			
25	G5901	19	17	41			SPIF
24	G296	19	17	27			INCH
23	G59	19	17	07			MUS
22	045	19	16	08			
21	2323	19	15	40			Scra
20	133	19	14	59			
19	4474	19	14	53			
18	AUS5585	19	14	41			LOC
17	6865	19	14	39			
16	15	19	14	24			
15	1505	19	14	05			

Click

Print

Print to

Hypertext Markup Language (*.HTM)

Comma Separated Variables (*.CSV)

Text (*.TXT)

Rich Text Format (*.RTF)

Internet

Windows Printer

Print Preview / Print Layout

Windows Printer

Brother HL-1210W series (Copy 1)

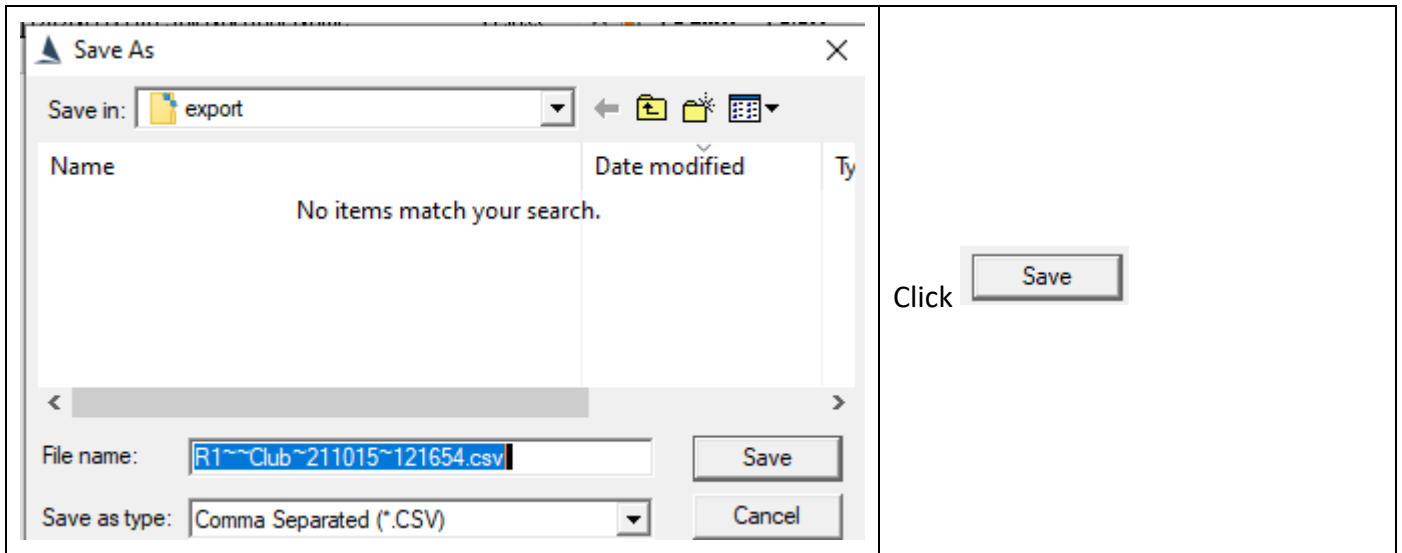
Printer Setup...

Print

➤ Select Comma Separated Variable radio button

➤ Click

TopYacht will nominate a default folder and file name to store the file



Associated Documents:

[Using TopYacht with Places rather than Times](#)

[TopYacht Web Times Users Guide](#)

[Stop Watch Handling Duplicates](#)

Revision Record

2021-10-15, 2021-10-11, 2021-07-21, 2021-03-19, 2020-02-16, 2019-07-17